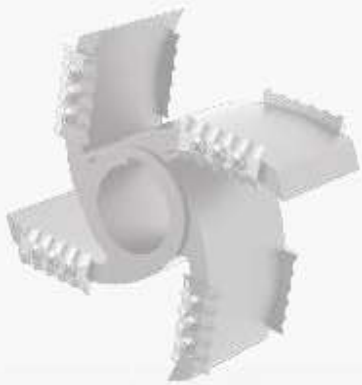




**Ostech Fluid
Technologies**



| Stainless Steel Sanitary Pumps

|TC.EVO

TC.EVO are stainless steel sanitary centrifugal pumps characterized by a **simple and robust design**, excellent efficiency in operating performance and high durability of its components, all combined with good quality/price ratio.

Suitable for **uses in the food, water treatment, chemical-pharmaceutical industries, wine & beverages.**

Versions

The hydraulic body components are available in two designs:

- The **-S version**, obtained by micro-casting process and machined. The number of components makes it the **most suitable solution for series applications and fast maintenance.**
- The **-SC version**, obtained using mechanical processes, is the **best solution for adapting the pump's multiple hydraulic characteristics to your specific operating point**, extending the range of covered performance beyond the limit of the -S version.



Technical Information

Parameters	Values
Max. Flow Rate	500 m ³ /h
Max. Head	100 m.c.a.
Temperature	between -20°C and +230°C Other outer range temperatures on request
Max. Inlet Pipeline Pressure	15 Bar
Max. Viscosity	300 cP
Dimensions of the Solid in Suspension	For clean liquids. For specific applications, the usage limits with suspended solids are indicated on the pump technical data sheet



The Heart

The **TC.EVO** series features an impeller produced in AISI 316 by casting process

Type

This series are equipped with a “**semi-open**” centrifugal impeller with 6 profiled blades

Advantages

Different profiles can be made from a single impeller model;
Absence of spots where bacteria can lurk;
Possibility to polish the entire impeller surfaces.



|TC.NS

A range of **high-performance** and robust stainless steel sanitary centrifugal pumps **specially developed to cope with the most demanding and adverse process conditions.**

Suitable for **uses in the food, water treatment, chemical-pharmaceutical industries, wine & beverages.**

Versions

Range of sanitary centrifugal pumps in stainless steel, with high strength and specifically designed in order to face the most demanding and adverse employment conditions. **The particular mechanical structure gives to the pump high resistance and stability** even in situations where the pressure on the inlet pipe line can reach up to 40 Bar, and the transferred fluid is discontinuous and non-homogeneous.

Furthermore, the design of the pump guarantees **easy and complete disassembly of each component of the hydraulic body** for inspection and cleaning.



Technical Information

Parameters	Values
Max. Flow Rate	250 m ³ /h
Max. Head	100 m.c.a.
Temperature	between -20°C and +240°C
Max. Inlet Pipeline Pressure	15 Bar on standard versions 40 Bar on specialized versions
Max. Viscosity	300 cP
Dimensions of the Solid in Suspension	Generally for clean liquids. For specific applications, the usage limits with suspended solids are indicated on the pump technical data sheet.



The Heart

Made of stainless steel [AISI 316](#) by [micro-casting process](#) and redesigned with [open blades](#) to reach high performances and to improve the flow conditions.

Type

The TC.NS pump series is equipped with an '[semi-open](#)' type centrifugal [impeller](#) with 6 [profiled blades](#).

Advantages

Depending on the specific requirements, it can be adapted with [different blade diameter](#) and [thickness](#).



|TC.EH

A range of sanitary stainless steel centrifugal pumps with an **hygienic and elegant design**, ideal for processes in the food and pharmaceutical industries **that aim to preserve the quality and integrity of treated fluids from foreign agents.**

Suitable for **uses in the food, water treatment, chemical-pharmaceutical industries, wine & beverages.**

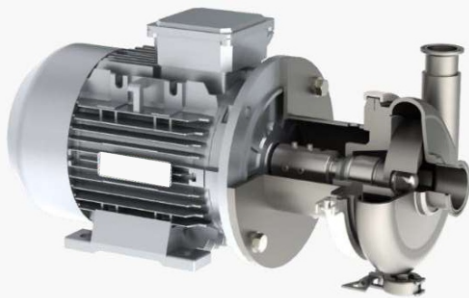
Versions

The TC.EH presents a unique version with a special architecture that **allows it to cover an extended performance range** while ensuring **high standards of hygiene**, allowing **rapid and complete disassembly and sanitization of each individual component.**



Technical Information

Parameters	Values
Max. Flow Rate	150 m ³ /h
Max. Head	70 m.c.a.
Temperature	between -20°C and +240°C
Max. Inlet Pipeline Pressure	12 Bar
Max. Viscosity	500 cP
Dimensions of the Solid in Suspension	For clean liquids or with presence of suspended solids also filamentous. Maximum dimensions of suspended solids indicated on the pump technical data sheet



The Heart

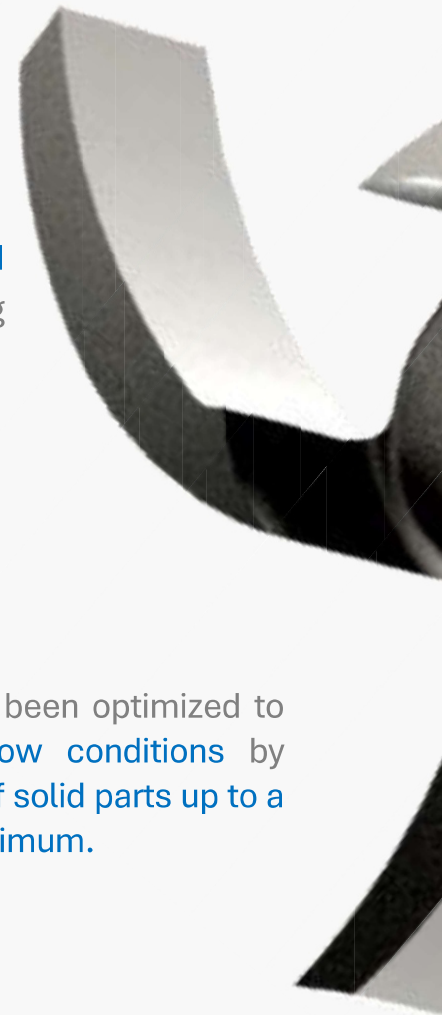
Made of **AISI 316 stainless steel** by **micro-casting** and **machined** to obtain a smooth blade surface.

Type

It is a “**open**” impeller composed of **three or four blades**, according to the required performances.

Advantages

The blading profile has been optimized to guarantee **the best flow conditions** by providing the **passage of solid parts up to a diameter of 10 mm maximum**.



|TC.GA

The TC.GA are high quality centrifugal pumps made of AISI 304/316 stainless steel.

Equipped with a backward “vortex” impeller to ensure **excellent pumping of liquids with suspended solids without them coming in contact with the impeller.**

Suitable for **uses in the food, water treatment, chemical-pharmaceutical industries, wine & beverages.**

Versions

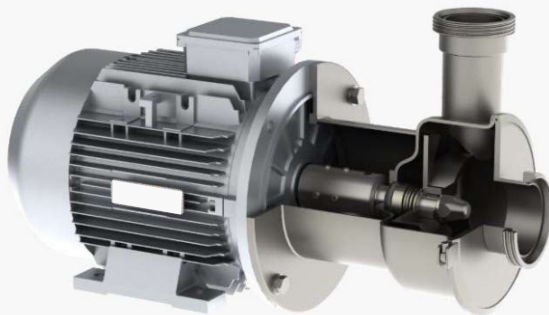
The TC.GA presents a singular version with a special mechanical design that is the best solution when it comes to pumping fluids from process wastewater from food, water treatment and chemical industries, therefore **with a high presence of suspended solids, even filamentous solids.**

Designed to allow both **high sanitability** and **rapid internal inspection of the pump.**



Technical Information

Parameters	Values
Max. Flow Rate	115 m ³ /h
Max. Head	40 m.c.a.
Temperature	between -20°C and +240°C
Max. Inlet Pipeline Pressure	9 Bar on the standard version
Max. Viscosity	500 cP
Dimensions of the Solids in Suspension	For clean liquids or with presence of suspended solids also filamentous. Maximum dimensions of suspended solids indicated on the pump technical data sheet



The Heart

Made of [AISI 304/316](#) stainless steel depending on the type of product to be pumped.

Type

The TC.GA pump series is equipped with a [5 blades open centrifugal impeller](#).

Advantages

The hydraulics have been re-designed to ensure [the best flow conditions](#).



|TC.ZV / TC.ZV-QS

The cutting-edge range of sanitary mixed flow pumps in stainless steel, equipped with helicoidal screw shaped impeller and realized with a rugged and innovative design. Ideal solution in the gentle hydraulic transportation of delicate food products such as fruits, vegetables or fishes, without damages or alterations to the organoleptic characteristics.

Suitable for uses in the food, aquaculture, water treatment industries, wine & beverages.

Versions

The hydraulic body components are available in two designs:

- The hydraulic architecture of the **TC.ZV** series is characterized by **strength and reliability** in applications where the transfer of large solid products is the main problem to be solved.
- The **“QS”** model are larger TC.ZV pumps assembled, almost in their entirety, by mechanical processes, making their structure more resistant. They are ideal for customized applications and **for conveying even very large delicate products**.



| Technical Information

Parameters	Values
Max. Flow Rate	1500 m ³ /h
Max. Head	40 m.c.a.
Temperature	between -20°C and +240°C
Max. Inlet Pipeline Pressure	15 Bar on standard version
Max. Viscosity	500 cP
Dimensions of the Solids in Suspension	For liquids with suspended solids, even filamentous. The maximum dimensions of the same are indicated on the pump technical data sheet



The Heart

Made of stainless steel **AISI 316** by **precision casting**.

The latest, bigger, models suits an **aluminum impeller**, **lighter and more resistant to corrosion**.

Type

The TC.ZV-TC.ZV/QS are equipped with a **single or dual mixed flow impeller**.

Advantages

The shape has been optimized to guarantee the **best flow conditions**, without damaging the delicate product transferred.



|TC.DV

One of our hits! Range of sanitary mixed flow pumps in stainless steel which exploits the efficiency of the helicoidal screw shaped impeller in those processes which is not allowed to alter the physico-chemical characteristics of the products, even in presence of suspended solids.

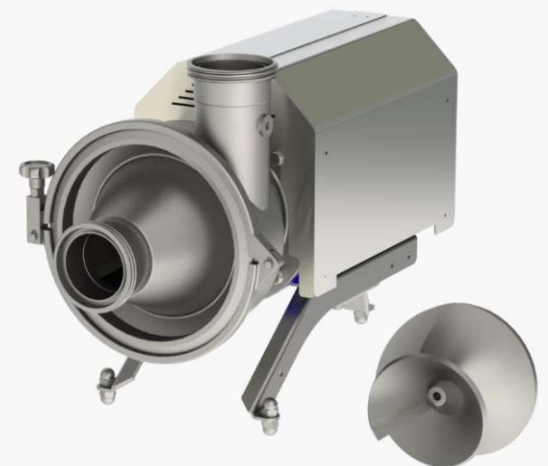
Suitable for uses in the food, water treatment industries, wine & beverages

Versions

The TC.DV features a design that is indispensable in areas where the alternation of the characteristics of the treated fluid is not permitted.

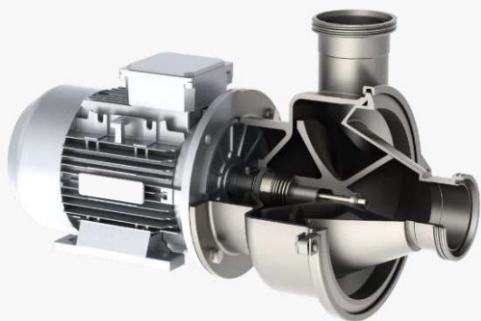
The peculiar profile of the impeller combined with a conical volute prevents the pump from clogging even in the presence of solid particles.

Mainly used in the **red wine industry**, perfect for remounting the product in the fermentation tanks.



Technical Information

Parameters	Values
Max. Flow Rate	125 m ³ /h
Max. Head	15 m.c.a.
Temperature	between -20°C and +150°C
Max. Inlet. Pipeline Pressure	9,5 Bar on standard version
Max. Viscosity	500 cP
Dimensions of the Solids in Suspension	For liquids with suspended solids, even filamentous. The maximum dimensions of the same are indicated on the pump technical data sheet



The Heart

An impeller manufactured in stainless steel AISI 316 with precision casting; the shape allows a gradual movement of the product from the suction port to the discharge chamber.

Type

The TC.DV pump series is equipped with a centrifugal impeller of mixed-flow type

Advantages

The peculiar impeller shape allows the passage of any solid parts suspended in the liquid, even in different percentages



|TA.N

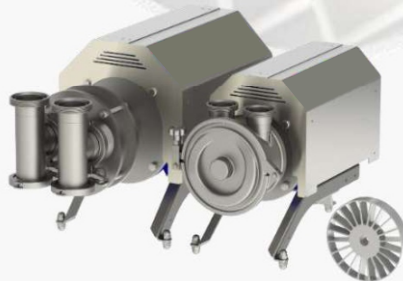
Another historical pump! TA.N: sanitary **self-priming** pumps in stainless steel with reversible liquid ring. Represent the ideal solution for suction systems, **reversible decanting** of clear fluids **even in situations where the fluid is not available continuously**.

Suitable for **uses in the food, water treatment, chemical-pharmaceutical industries, wine & beverages**.

Versions

The hydraulic body components are available in two construction solutions:

- The **classic version**, obtained by a micro-casting process and subsequently machined. It has **fewer components** and is therefore the most recommended solution **for series applications and fast maintenance**.
- The **SC version**, obtained from mechanical processes, in **the most suitable solution for matching the hydraulic characteristics of the pump to the working point required**, extending the range of performances covered beyond the limits of the classic version



Technical Information

Parameters	Values
Max. Flow Rate	100 m ³ /h
Max. Head	55 m.c.a.
Temperature	between -20°C a +240°C Other temperatures on request
Max. Inlet Pipeline Pressure	From -8 m.c.a. for suction application to 9,5 Bar on standard versions for in charge applications
Max. Viscosity	100 cP
Dimensions of the Solids in Suspension	For clean liquids or soluble powders mixed with aqueous base solutions



The Heart

The TA.N boast a configuration made by mechanical processes in **stainless steel AISI 316** that allows the pump to operate in the **two directions of rotation**.

Type

The TA.N pump series is equipped with a **star-type impeller**, which consists of a **radial arrangement of the blades** with respect to the axis of rotation

Advantages

In order to cover a wide operative range and to satisfy different requirements, **the thickness of the impeller blades can be adjusted**



|TA.L - SC

Range of stainless steel sanitary **self-priming** pumps with **monodirectional liquid ring**. Ideal for **suction applications** for **decanting of clear fluids** even in presence of discontinuous supply of the flow to the pump, or as a return pump in the CIP cleaning system.

Suitable for **uses in the food, water treatment, chemical-pharmaceutical industries, wine & beverages**.

Versions

The TA.L-SC is obtained from mechanical processes and it's the most suitable **solution for adapting the hydraulic characteristics of the pump to your specific working point**, extending the range of performance covered beyond the limit of the classic version.

The pump's hydraulics **guarantee an excellent performance** in applications where **several metres of negative suction height difference** is the problem to be solved



Technical Information

Parameters	Values
Max. Flow Rate	100 m ³ /h
Max. Head	60 m.c.a.
Temperature	between -20°C and +240°C. Other temperatures on request
Max. Inlet Pipeline Pressure	From -8 m.c.a. for suction applications to 9,5 Bar on standard versions for in charge applications
Viscosity	100 cP
Dimensions of the Solids in Suspension	For clean liquids or soluble powders mixed with aqueous base solutions





**Ostech Fluid
Technologies**

Ostech Fluid Technologies

Reg. Address : J-87, Sector 27, Pradhikaran, Nigdi, Pune – 411 044.

Works : Gala No. 38, Parmar Industrial Complex, Akurdi, Pune - 411 019.

Mail : info@ostechfluid.co.in | Web : www.ostechfluid.co.in

Pune

Mumbai

Delhi

Baroda

Chennai

Banglore

Hyderabad